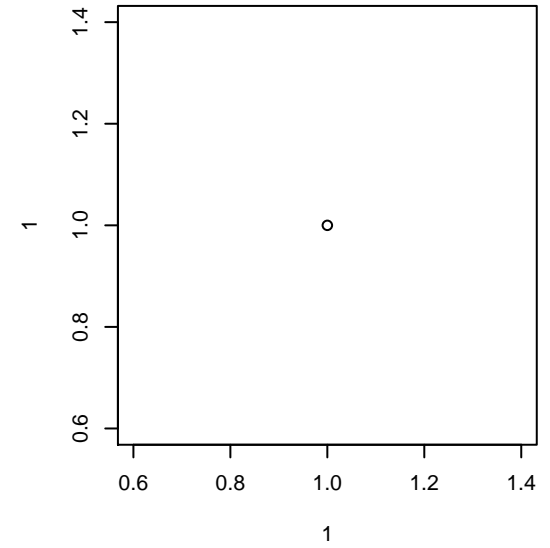


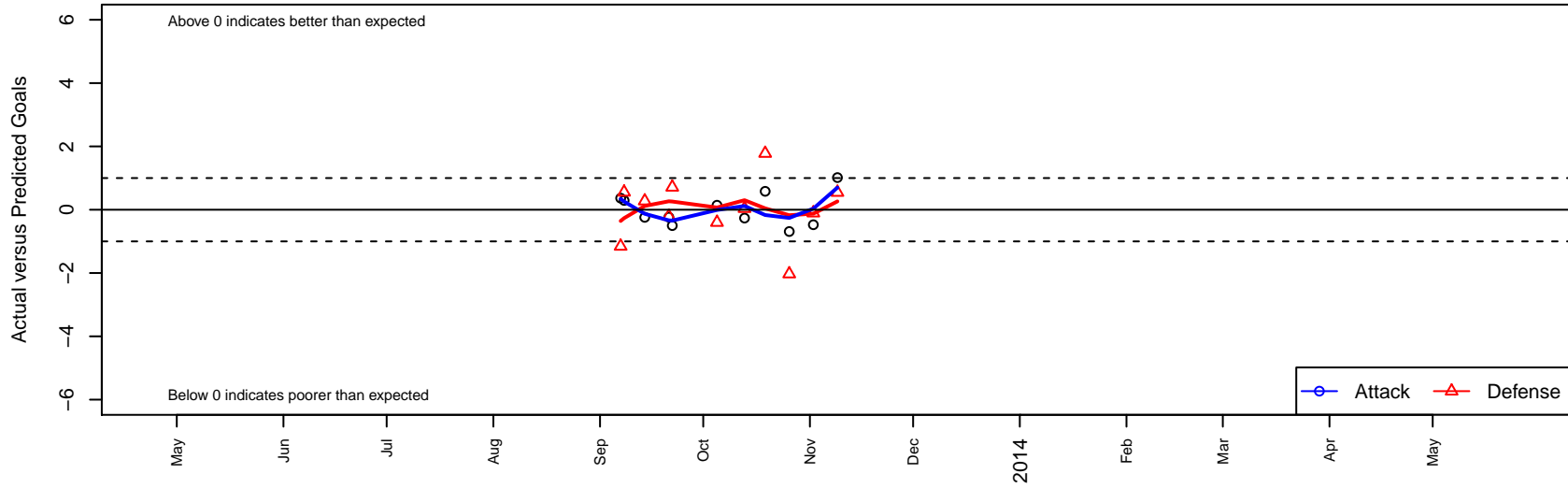
Eagles SC Premier G99

, CAS
 G99 total strength=1350
 attack=6.3 defense=7.17
 fall league = CSL Premier U14
 alt names used:
 EAGLES PREMIER

Venues played:
 CSL Premier U14



Eagles SC Premier G99
 Dots are actual minus expected GF (blue circles) and GA (red triangles).
 Blue line is smoothed change in attack strength. Red is smoothed change in defense strength.



	date	home		away		venue	pred.home	pred.away
15216	2013-11-09	Eagles SC Premier G99	2	Granada United G99	1	CSL Premier U14	0.98	1.55
15012	2013-11-02	IE Surf G99	2	Eagles SC Premier G99	0	CSL Premier U14	1.90	0.47
14832	2013-10-26	Eagles SC Premier G99	0	LA Premier FC G99	3	CSL Premier U14	0.69	0.97
14629	2013-10-19	Corinthians SC G99	0	Eagles SC Premier G99	1	CSL Premier U14	1.78	0.42
14544	2013-10-13	Eagles SC Premier G99	0	Albion SC White G99	4	CSL Premier U14	0.26	4.04
14199	2013-10-05	Eagles SC Premier G99	1	Greater Long Beach SC Fury G99	2	CSL Premier U14	0.86	1.60
13902	2013-09-22	Eagles SC Premier G99	0	Breakers Black G99	0	CSL Premier U14	0.50	0.71
13759	2013-09-21	Desert United G99	1	Eagles SC Premier G99	1	CSL Premier U14	0.79	1.24
13540	2013-09-14	Eagles SC Premier G99	0	Carlsbad Lightning Red G99	3	CSL Premier U14	0.24	3.28
13467	2013-09-08	FC Golden State G99	1	Eagles SC Premier G99	1	CSL Premier U14	1.55	0.71
13327	2013-09-07	Tustin United Red G99	2	Eagles SC Premier G99	1	CSL Premier U14	0.84	0.64